

Title: Conversations

Subtitle: Revised FL-Studio System for the LaunchKey Mk2

Second Subtitle: Revised FL-Studio System for the LaunchKey Mk2

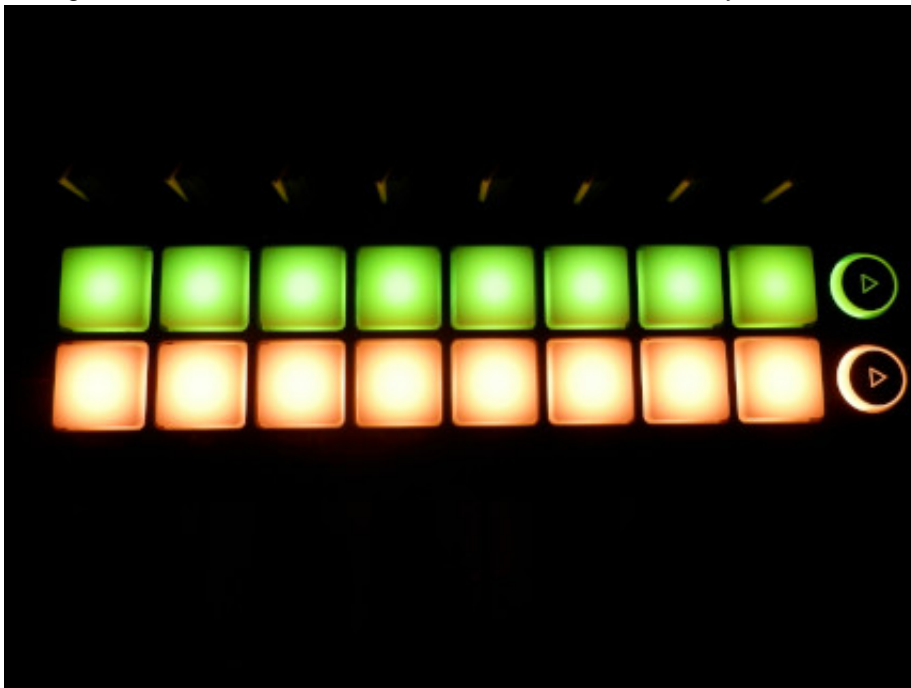
Author: wizanda

Date: 1602875143

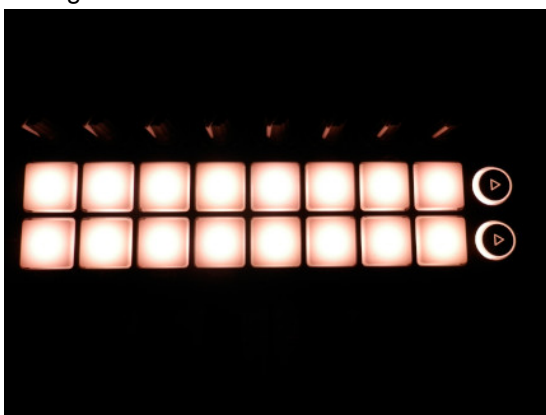
URL: https://www.wizanda.com/modules/newbb/viewtopic.php?topic_id=23

Here is a new Launchkey Mk2, which is a much better coloured, and designed to work with the features in the system.

Page 1 can't be edited, and is already default for Performance mode.



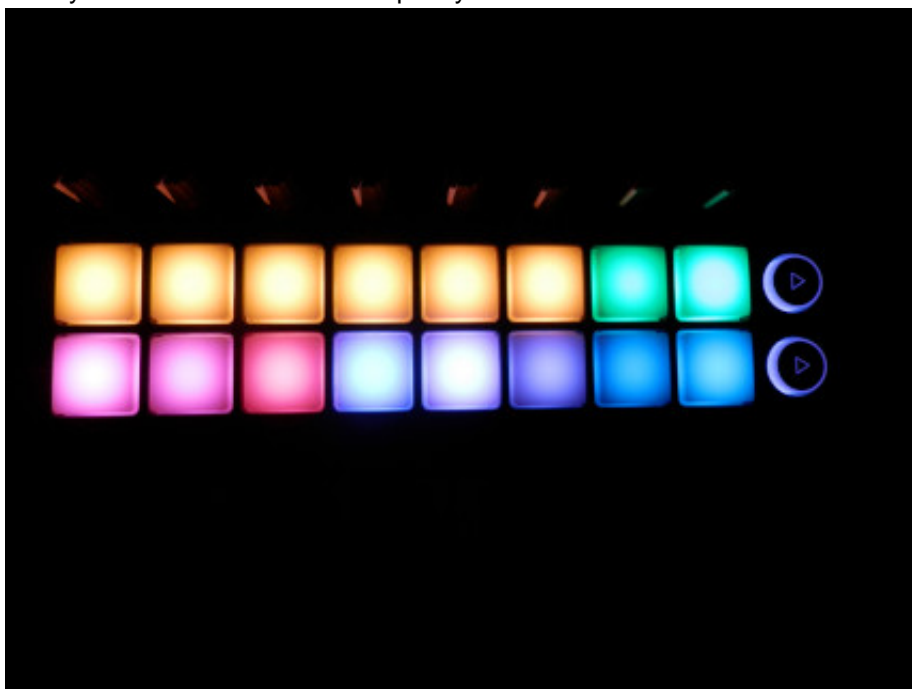
Page 2-5 are now colour coordinated like Grossbeat, and flashing to the



Page 6 is for Slicex, and FruitySlicer, where by default each hit is set to sensitive enough at lower levels.



Page 7 is now colour coordinated with FPC, and again the hits are at 80% way someone could play a live set with those - At 80% we can use it to p



Page 8 is now a recording controller:

- Yellow pads

1) Metronome 2) Wait for input to start 3) Overdubbing 4) Recording 5) Recording

Loop record) Step edit Thru modes

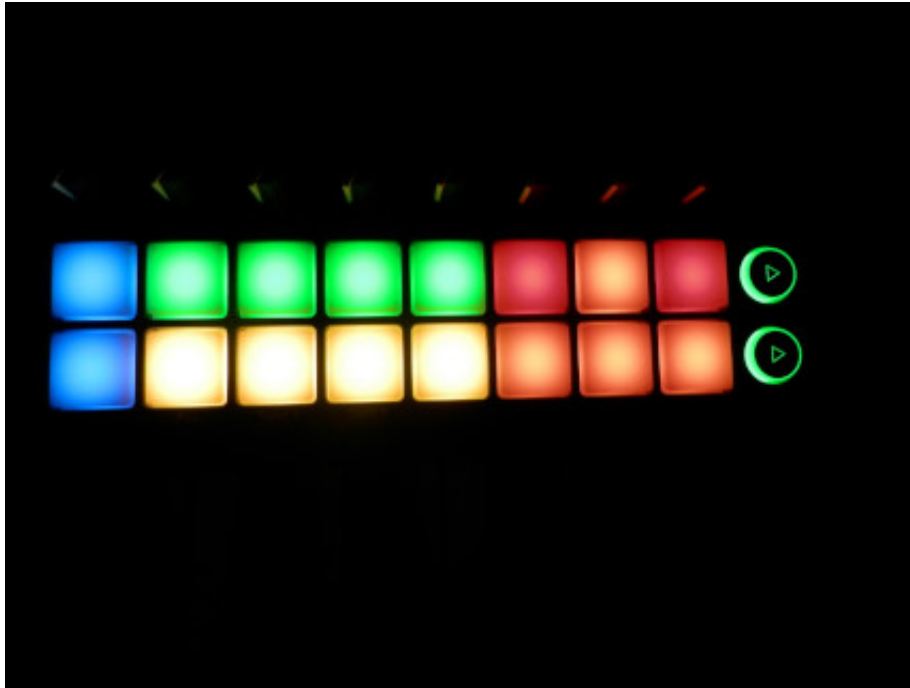
7) Snap On/Off Snap Select

- Rose

1) Tap tempo Tempo Up/Tempo Down

4) Push Add Marker B000

7) Undo HT the arrow keys control Fast-forward, and Rewind - so we can recording.



Page 9 is for navigation Blue Launchkey group and down 1-4 at Center (F2-F5), and 1-4 Yellow (F6-F9). keys work like arrow keys (up, down, left, right); when enter, and red left the escape keys on the FPC, Slicex, Navigation, are set Next.

The Launchkey Hardware settings when InControl is off, has the master sliders, and dials now go to stereo spread across the 16 channels.